

# CHECK VALVE SERIES VCA100

ESBE check valves are designed for lowest possible pressure drop combined with a low opening pressure.



## OPERATION

ESBE check valve series VCA is constructed for a low pressure reduction combined with low opening pressure. The valve's function is independent of position with the lowest opening pressure in a vertical pipe with the flow from above.

The valve is intended for internal use in pipes 15x1 or 22x1.

## MEDIA

Maximum 50% glycol for freezing protection and oxygen absorbing compounds are allowed as additives. As both the viscosity and the thermal conduction are affected when glycol is added to the system water, this fact has to be considered when dimensioning the valve.

A good rule is to choose one size higher Kv-value when 30 - 50% glycol is added. A lower concentration of glycol may be disregarded.

## TECHNICAL DATA

Max. working temperature: \_\_\_\_\_ 110°C

Material

Body - DN15: \_\_\_\_\_ Dezincification resistant brass, DZR\*

- DN 20: \_ Dezincification resistant brass, DZR\*/Copper

Plug: \_\_\_\_\_ Dezincification resistant brass, DZR\*

Spring resort: \_\_\_\_\_ Plastic

Spring: \_\_\_\_\_ Stainless steel

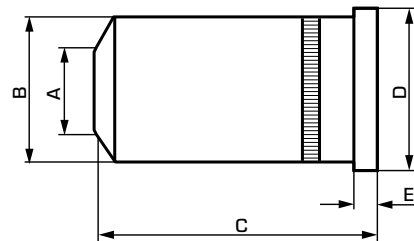
O-ring: \_\_\_\_\_ EPDM

\* Suitable for drinking water applications

PED 2014/68/EU, article 4.3 / SI 2016 No. 1105 (UK)

4MS/UBA

4MS/KTW-BWGL



## SERIES VCA100

Art. No.	Reference	DN	Kvs*	A	B	C	D	E	Opening pressure [kPa]			Weight [kg]
									↑	→	↓	
36500100	VCA100	15	1,5	8,0	12,8	27,0	14,5	2,0	4,0	3,8	3,5	0,01
36500400		20	4,0	12,0	19,8	30,0	21,5		2,5	2,3	2,0	0,02

\*Kvs-value m<sup>3</sup>/h at a pressure drop of 1 bar,